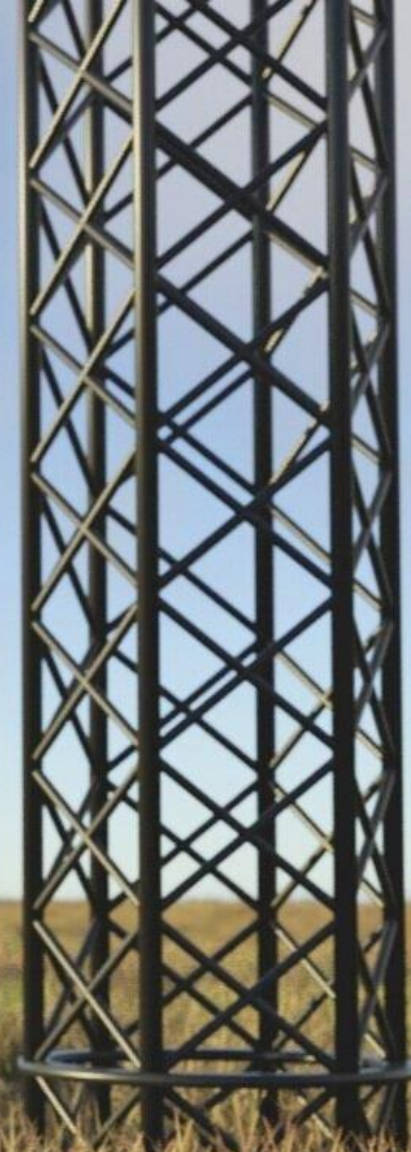


ISO TRUSS
INC



Marianne Clayton
Director of R&D

IACMI Summer Members Meeting
June 29, 2022
Salt Lake City, UT



THE ISO TRUSS

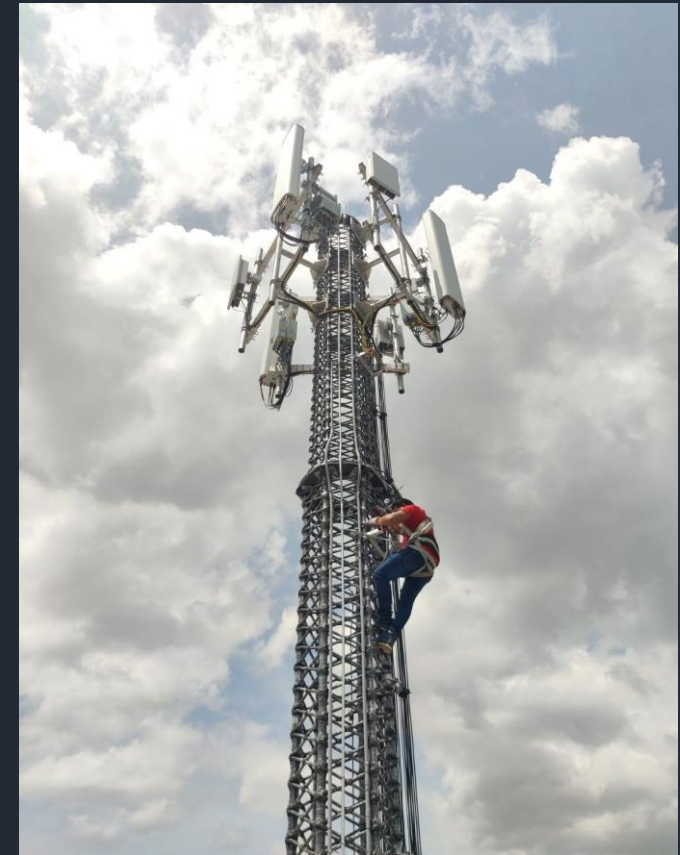
Invented by Dr. David W. Jensen at
BYU in 1994

IsoTruss, Inc. founded by Mr. Nathan
D. Rich in 2015

Additional grid structures designed and
developed

30 patents granted/pending

Headquartered in Springville, UT
Telecom cell tower operation in
Philippines



THE TECHNOLOGY

Composites are...

- Corrosion-resistant
- Sustainable
- Lightweight

The IsoTruss geometry is...

- **Lighter Weight**
- **More Resilient**
- **Lower Drag**

Manufacturing:

- Manual or automated filament winding
- Continued development of commercial-scale fiber placement and consolidation



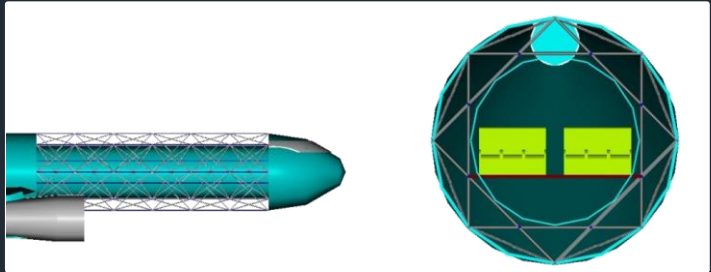
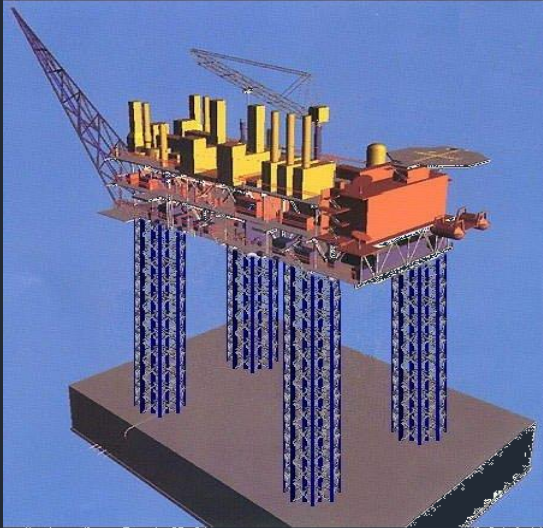
BUILD FOR TOMORROW



Telecom Towers



Concrete Reinforcement



SELECT CLIENTS AND CUSTOMERS



AMERICAN TOWER®



ISO TRUSS AND IACMI

IACMI and UAMMI Member

Participant in Infrastructure & Construction Working Group

Goal:

- Support expansion of composites applications
- Break barriers to adoption
- Partner to obtain funding for large projects

Marianne Clayton
marianne@isotruss.com
(801) 836-7034